



RF113
RF114

RF686
RF687
RF688

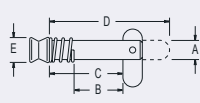
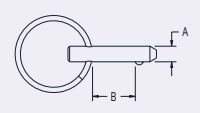
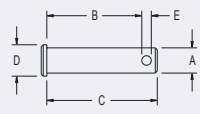
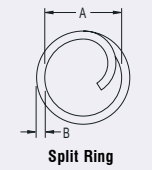
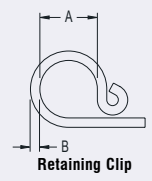
RF413

CLEVIS PIN

RF5310

TOGGLE PIN

PRODUCT No.	DESCRIPTION	A		B		SUITS CLEVIS PINS					WEIGHT g (oz)	
		mm	(in.)	mm	(in.)	mm	(in.)	mm	(in.)	mm		(in.)
Split Rings and Clips												
RF113	Split ring	9.5	(3/8)	1.0	(1/32)	RF258 – RF266					1 (0.1)	
RF114	Split ring	11.1	(7/16)	1.3	(1/16)	RF260 – RF266					2 (0.1)	
RF413	Retaining Clip	16.0	(5/8)	2.7	(3/32)	RF267 – RF274					3 (0.1)	
RF686	Split ring	14.3	(9/16)	1.3	(1/16)	RF260 – RF274					4 (0.1)	
RF687	Split ring	18.8	(3/4)	1.6	(1/16)	RF260 – RF274					5 (0.2)	
RF688	Split ring	25.0	(1)	2.0	(3/32)	RF267 – RF278					5 (0.2)	
Clevis Pins												
		mm	(in.)	mm	(in.)	mm	(in.)	mm	(in.)	mm	(in.)	WEIGHT g (oz)
RF258		3.9	(5/32)	9.1	(11/32)	13.1	(1/2)	6.4	(1/4)	2.0	(5/64)	1 (0.1)
RF259		4.6	(3/16)	9.0	(11/32)	12.2	(15/32)	6.4	(1/4)	2.0	(5/64)	2 (0.1)
RF260		4.8	(3/16)	12.7	(1/2)	16.0	(5/8)	6.4	(1/4)	2.2	(3/32)	3 (0.1)
RF261		4.8	(3/16)	19.0	(3/4)	22.0	(7/8)	6.4	(1/4)	2.2	(3/32)	3 (0.1)
RF262		4.8	(3/16)	25.0	(1)	28.0	(1 1/8)	6.4	(1/4)	2.2	(3/32)	5 (0.2)
RF263		6.4	(1/4)	12.7	(1/2)	16.5	(21/32)	7.9	(5/16)	2.4	(3/32)	5 (0.2)
RF264		6.4	(1/4)	19.0	(3/4)	23.0	(29/32)	7.9	(5/16)	2.4	(3/32)	5 (0.2)
RF265		6.4	(1/4)	25.0	(1)	30.0	(1 3/16)	7.9	(5/16)	2.4	(3/32)	10 (0.4)
RF266		6.4	(1/4)	32.0	(1 1/4)	36.0	(1 7/16)	7.9	(5/16)	2.4	(3/32)	10 (0.4)
RF267		7.9	(5/16)	12.7	(1/2)	16.5	(21/32)	9.5	(3/8)	2.7	(3/32)	10 (0.4)
RF268		7.9	(5/16)	19.0	(3/4)	23.0	(29/32)	9.5	(3/8)	2.7	(3/32)	10 (0.4)
RF269		7.9	(5/16)	25.0	(1)	30.0	(1 3/16)	9.5	(3/8)	2.7	(3/32)	10 (0.4)
RF270		7.9	(5/16)	32.0	(1 1/4)	36.0	(1 7/16)	9.5	(3/8)	2.7	(3/32)	15 (0.5)
RF271		9.5	(3/8)	19.0	(3/4)	24.0	(15/16)	12.7	(1/2)	4.0	(5/32)	15 (0.5)
RF272		9.5	(3/8)	25.0	(1)	31.0	(1 1/4)	12.7	(1/2)	3.6	(5/32)	20 (0.7)
RF273		9.5	(3/8)	32.0	(1 1/4)	37.0	(1 7/16)	12.7	(1/2)	3.7	(5/32)	20 (0.7)
RF274		9.5	(3/8)	38.0	(1 1/2)	43.0	(1 11/16)	12.7	(1/2)	3.7	(5/32)	25 (0.9)
RF275		12.7	(1/2)	19.0	(3/4)	25.0	(1)	15.9	(5/8)	3.5	(1/8)	30 (1.1)
RF276		12.7	(1/2)	25.0	(1)	31.0	(1 1/4)	15.9	(5/8)	3.5	(1/8)	35 (1.2)
RF277		12.7	(1/2)	32.0	(1 1/4)	38.0	(1 1/2)	15.9	(5/8)	3.5	(1/8)	40 (1.4)
RF278		12.7	(1/2)	38.0	(1 1/2)	44.0	(1 3/4)	15.9	(5/8)	3.5	(1/8)	50 (1.8)
RF537		15.9	(5/8)	25.0	(1)	33.0	(1 5/16)	19.0	(3/4)	4.0	(5/32)	55 (1.9)
RF538		15.9	(5/8)	32.0	(1 1/4)	38.0	(1 1/2)	19.0	(3/4)	4.4	(5/32)	65 (2.3)
RF539		15.9	(5/8)	38.0	(1 1/2)	45.0	(1 3/4)	19.0	(3/4)	4.4	(5/32)	75 (2.7)
Fast Pin												
RF5310		4.8	(3/16)	12.5	(1/2)	-	-	-	-	-	-	7 (0.2)
Toggle Pins												
RF115x1/2		6.4	(1/4)	8.4	(5/16)	12.7	(1/2)	33.0	(1 5/16)	7.9	(5/16)	10 (0.4)
RF115x5/8		6.4	(1/4)	10.5	(13/32)	15.9	(5/8)	36.5	(1 7/16)	7.9	(5/16)	10 (0.4)
RF115x3/4		6.4	(1/4)	14.5	(9/16)	19.0	(3/4)	39.0	(1 9/16)	7.9	(5/16)	10 (0.4)
RF115x1		6.4	(1/4)	20.0	(3/4)	25.4	(1)	45.0	(1 3/4)	7.9	(5/16)	10 (0.4)
RF115x1 1/4		6.4	(1/4)	26.5	(1)	32.0	(1 1/4)	51.5	(2)	7.9	(5/16)	15 (0.5)
RF117x1 1/2		9.5	(3/8)	31.5	(1 1/4)	47.0	(1 3/4)	70.0	(2 15/16)	12.7	(1/2)	35 (1.2)



Note: 'B' is the maximum thickness of material the toggle pin can pass through, allowing correct toggle operation.