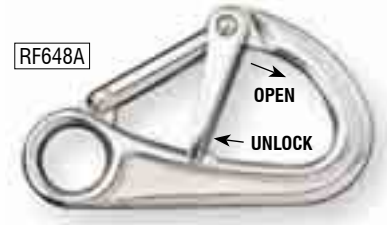


CARBINE HOOKS, QUICKLINKS & RINGS

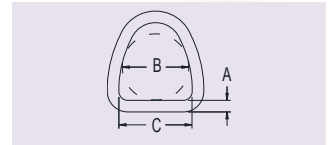
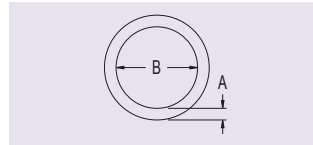
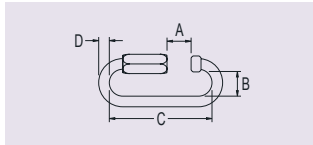
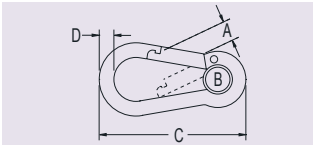
CARBINE HOOK NON-LOCKING



QUICKLINKS



STAINLESS STEEL RINGS



FEATURES

- ▶ Carbine hooks have ferrule lined or closed eyes to retain the fixed line.
- ▶ RF648A carbine hook has a spring lever lock for one-handed operation.
- ▶ RF650 carbine hook opens inwards and has a threaded locking sleeve for added security.
- ▶ RF16 'D' ring suits use with 50mm (2") webbing.
- ▶ Quicklinks have large openings and secure threaded locking sleeves. They are available in standard and long ('L' suffix product number) styles.

PRODUCT No.	A mm	A (in.)	B mm	B (in.)	C mm	C (in.)	D mm	D (in.)	B.L. kg	B.L. (lb)	WEIGHT g	WEIGHT (oz)	
Carbine Hook - Non Locking													
RF2355	9.0	(11/32)	9.0	(11/32)	60	(2 3/8)	6	(1/4)	520	(1145)	28	(1.0)	
RF652	11.0	(7/16)	11.0	(7/16)	80	(3 1/8)	8	(5/16)	800	(1760)	68	(2.4)	
RF653	15.0	(19/32)	15.0	(19/32)	100	(3 15/16)	10	(13/32)	1200	(2640)	129	(4.6)	
Carbine Hook - Threaded Locking Sleeve													
RF650	13.0	(17/32)	14.0	(17/32)	100	(3 15/16)	10	(13/32)	1200	(2640)	134	(4.7)	
Carbine Hook - Spring Locking Lever													
RF648A	10.0	(13/32)	17.0	(11/16)	19.7	(3/4)	107	(4 3/16)	1400	(3080)	184	(6.5)	
Quicklinks													
RF711	5.5	(3/16)	11.5	(7/16)	32	(1 1/4)	4	(5/32)	1400	(3085)	12	(0.4)	
RF711L	11.5	(7/16)	11.5	(7/16)	45	(1 3/4)	4	(5/32)	1250	(2755)	15	(0.5)	
RF712	7.5	(5/16)	14.5	(9/16)	45	(1 3/4)	6	(1/4)	3250	(7165)	35	(1.2)	
RF712L	14.5	(9/16)	14.5	(9/16)	59	(2 5/16)	6	(1/4)	2900	(6390)	42	(1.5)	
RF713	11.0	(7/16)	17.5	(11/16)	58	(2 5/16)	8	(5/16)	5500	(12125)	79	(2.7)	
RF713L	16.0	(5/8)	16.5	(5/8)	72	(2 13/16)	8	(5/16)	4900	(10800)	95	(3.3)	
RF714	12.0	(15/32)	20.5	(13/16)	69	(2 11/16)	10	(13/32)	9000	(19840)	140	(4.9)	
RF714L	20.6	(13/16)	20.5	(13/16)	86	(3 3/8)	10	(13/32)	8000	(17635)	160	(5.7)	
PRODUCT No.	TYPE	A mm	A (in.)	B mm	B (in.)	C mm	C (in.)	M.W.L. kg	M.W.L. (lb)	B.L. kg	B.L. (lb)	WEIGHT g	WEIGHT (oz)
Rings													
RF122	Round	4	(5/32)	38.0	(1 1/2)	-	-	180	(396)	1100	(2420)	12	(0.4)
RF123	Round	5	(3/16)	25.4	(1)	-	-	600	(1320)	2200	(4840)	14	(0.5)
RF48	Round	6	(1/4)	25.4	(1)	-	-	900	(1980)	3000	(6600)	15	(0.5)
RF124	Round	6	(1/4)	38.0	(1 1/2)	-	-	650	(1430)	3000	(6600)	40	(1.4)
RF125	Round	8	(5/16)	42.5	(1 5/8)	-	-	700	(1540)	3500	(7700)	55	(1.9)
RF16	D-Ring	8	(5/16)	45.0	(1 3/4)	50	(2)	600	(1320)	1200	(2640)	75	(2.7)